



Sen. A.G. Crowe



Sen. J.P. Morrell



Rep. Ray Garofalo

**The St. Bernard Port, Harbor and Terminal District Board of Commissioners**



Harold J. Anderson



Rev. Henry Ballard Jr.



P. James DiFatta



Elton J. LeBlanc



Cheri Chestnut Quigley

*Commissioners are unpaid public servants appointed by the Governor.*



Robert J. Scafidel  
Executive Director

**The Administration of the St. Bernard Port, Harbor and Terminal District**



Drew M. Heaphy  
Director of Administration



Jerry V. Graves, Sr.  
Director of Operations



Joseph T. Roche, III  
Project Manager



Ricky Melerine  
Community Liaison



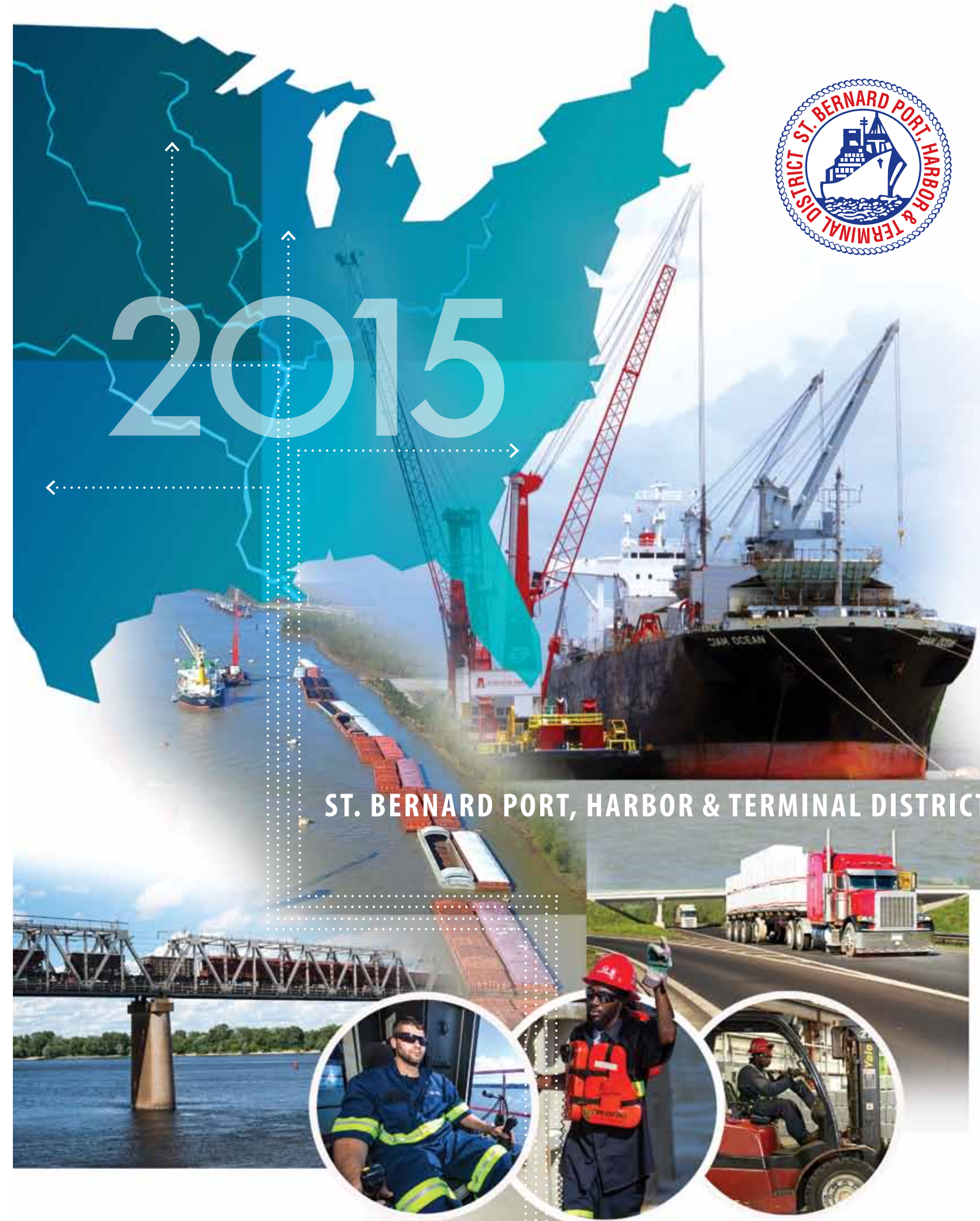
Nunzio Cusimano  
Agreement Analyst



Eric Acosta  
Port Facility Security Officer

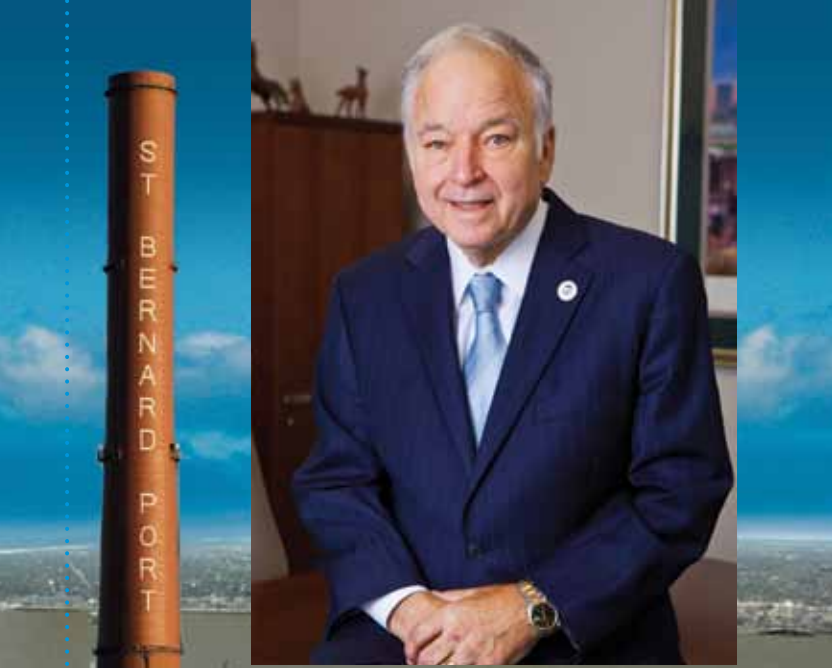


St. Bernard Port, Harbor & Terminal District  
100 Port Blvd. • Chalmette, Louisiana 70043  
504-277-8418 • Fax: 504-277-8471 • www.stbernardport.com



2015

ST. BERNARD PORT, HARBOR & TERMINAL DISTRICT



## A Message From The Executive Director

St. Bernard Port, Harbor and Terminal District experienced another great year of prosperity and growth during calendar year 2014. There were three hundred, twenty-six (326) ocean-going ships that chose St. Bernard Port as their Port of Call for the purpose of loading and/or unloading their cargos. Over eight million, four hundred thousand tons of cargo was handled at Port-owned facilities during this period. The types of cargo included barite, fertilizer, grain and ferro-alloys to name just a few of the dry bulk commodities trans-loaded in any number of ways from barge to ship, ship to dock, dock to rail, barge to truck-by the Port's Marine Terminal Operator (MTO). The MTO was able to secure increased tonnage in labor intensive general cargos in 2014, accounting for over one million tons of the total tonnage and creating additional jobs and opportunities at the Port.

Most parish residents are not aware of the scale of the economic activity taking place behind the floodwalls and levees of the Mississippi River. All along the River from Violet to Arabi, St. Bernard Port handles millions of tons of bulk, break-bulk and general cargo transfers, to and from thousands of barges and hundreds of ships. These cargos are warehoused and then ultimately loaded onto thousands of trucks and railcars. St. Bernard Port moves more railroad cars than any terminal in the southeastern U.S. St. Bernard's Port-owned facilities are capable of handling up to seven ships simultaneously. The vital raw materials unloaded at

St. Bernard Port contribute to the nation's agricultural and industrial industries while exports of grain and coal help to sustain our trading partners with food and fuel.

The Port, its tenants and users of the Port's facilities produce an estimated \$325 million in direct and indirect spending annually for the local economy. Collectively, the Port's forty-eight occupied lease areas provide citizens with over 800 direct, full-time jobs. In addition, port-related business activity in the region create 1,200 indirect jobs. The combined total is over 2,000 jobs. Most of the people who benefit from Port generated economic activity are the residents of St. Bernard Parish.

The Port's mission is to create jobs and provide economic development having a positive impact on St. Bernard Parish and its citizens. The Port has been successful at facilitating commerce by partnering with federal agencies, participating in state funding programs and all in conjunction with private businesses. The Port, its Board of Commissioners and I will continue to pursue opportunities to encourage growth and future success for the Port and the citizens of our community.

Robert J. Scafidel, Executive Director



The scale of economic activity at the Port is impressive.





Cargo off-loaded at the Port is transported to cities across the nation by barges, rail cars, and trucks.



Bulk commodities moved through the Port fuel the nation's industries.

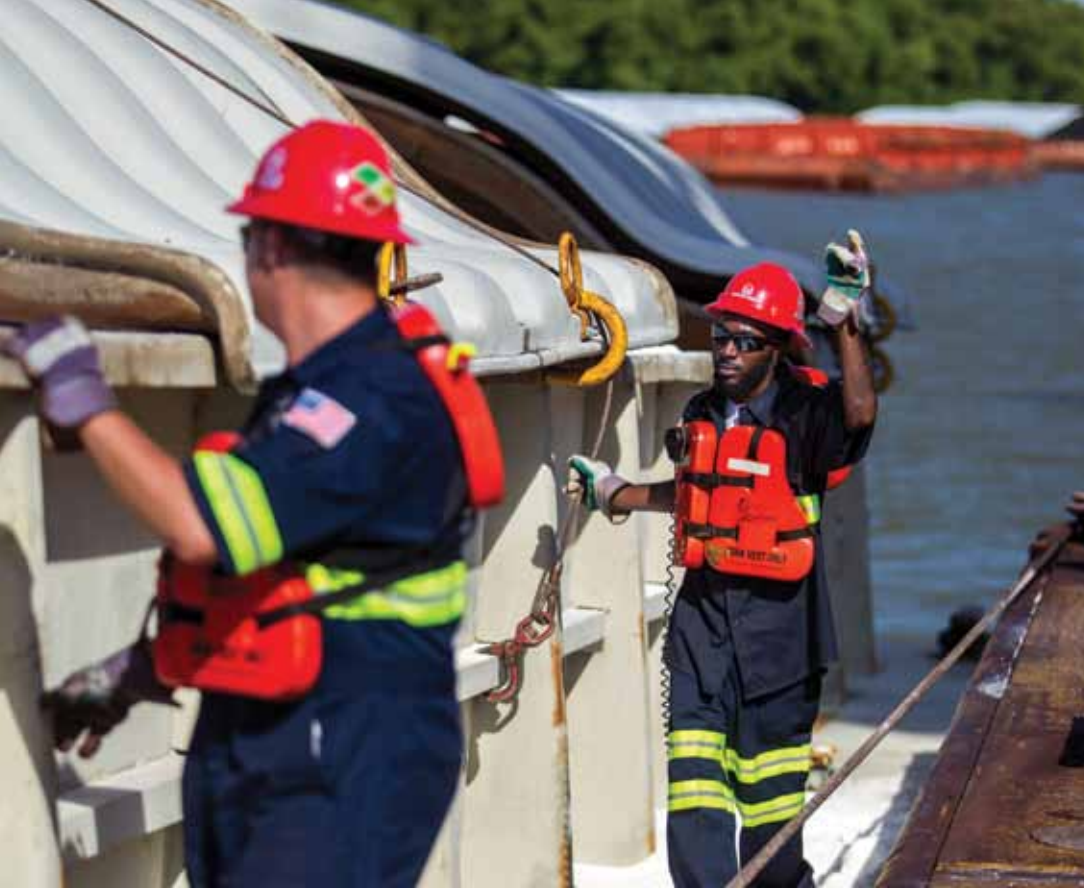


The Mississippi River is the busiest shipping corridor in the world. St. Bernard Port is strategically located on the lower Mississippi at the convergence of the Gulf Intracoastal Waterway system and the Industrial Canal. The unique location is ideally situated for the transportation of raw materials by ship and barge throughout the United States. By land the Port is connected to the entire nation by all six Class One Railroads, as well as Interstate highways I-10, I-610 and I-510.

Our Marine Terminal Operator, one of the largest stevedoring companies on the river, loads and off-loads raw materials at the Port's facilities. Fertilizers from South America are unloaded and shipped by barge to the nation's heartland to help in the production of grain crops. The produced grain is then shipped back down river to be exported. Ferro Alloys from Central America and South Africa are off-loaded and barged to foundries where they are made into steel for automobile manufacturing. The Port handles 95% of all barite imported from China which is then transferred to barges and shipped to plants in Louisiana to create drilling fluid mud for the oil industry. Steel from Korea is off-loaded and shipped to Pittsburgh and Chicago. Lumber, metallic ores, minerals, petroleum, metallurgic coke, zinc concentrates, aluminum, steel and copper products are all handled at the Port's terminals. The Port operates 24/7 - 365 days a year fueling the nation's industries.



The Port's employees have contributed greatly to our success.



**Administration Staff** left to right: Karen Boniol, Donna Landwehr, Denise Kraesig, Joelle Michel, Sonya Maas



Now, more than ever, Port security is top priority. Headquartered in the Administrative Complex, Maritime Security Operation Center (MSOC) is equipped with the most sophisticated surveillance and monitoring technology available today. An experienced team of security professionals work 24/7 with national, state and local law enforcement to maintain safety.

The Port generates more than 2,000 jobs in St. Bernard Parish.



**Maintenance Staff** left to right: Jason LaFontainem, Louis Lagman, Ryan Fayard, Brian Newman, Shane Espongem, Heath Ragas, Mark Anselmo, Corey Longo, John Ducoing. Not shown: Wilford Douglas, John R. Gebbia



St. Bernard Port has become the economic engine of St. Bernard parish. The Port provides 18% of the jobs in St. Bernard. There are over 800 full-time employees at the Port's terminals. There are 48 different lessee-related businesses located at the Port creating an additional 1,200 jobs.

The Port and its tenants create the jobs, but the success of the Port is directly related to the continued efforts of the people who are employed here.

Administrators, accountants, support staff, security personnel, maintenance crews, marine captains, deck hands, mechanics, electricians, engineers, railroad engineers, truck drivers, welders, stevedores, warehouse staff, tank cleaners, crane operators and many others work hard building a better life for their families and their community.



**Security Staff** left to right: Joseph Roberts, Sabrina Culotta, Angela Nunez, Trenell Aisola, Martin Nunez, Jude Robin, Rebecca Straub, Stanley Moley, Debra Terminie, Richard Pecot, Melissa Adams, Inez Dalon. Not shown: Ronald Nunez, Frances Smith, Lance Whiting, Thomas Fayard



The Port provided a reception and reservation area for re-enactors of the Battle of New Orleans Bicentennial.

